



ROVEEE.COM

Flexibility of a Mini. Price of a Micro.

Pobletech Inc. Roboteknik
Extreme Environment Robotics

www.roveee.com

ROVEEE stands for Remotely Operated Vehicle for Extreme Environment Exploration.

This latest release of ROVEEE is the product of almost a decade of research and development, integrating cumulative customer feedback and field experiences.

The following are some of the exciting new features of this release:



VECTORABLE THRUSTERS

This Vectorable Thruster is brushless, gearless, and fully oil compensated. ROVEEE's unique thruster design integrates all the latest propulsion technologies, packed into the most compact thruster in its class.

Its short length enabled by advanced technology allows it to be vectorable from 15 up to 30 degrees without sticking out of the protective ROV frame allowing the user to direct power where it is needed: less vector for more pulling power, more vector for greater maneuverability.

Construction is top quality all-metal 2-piece machined aluminum alloy casing. It's made to be tough and dependable.

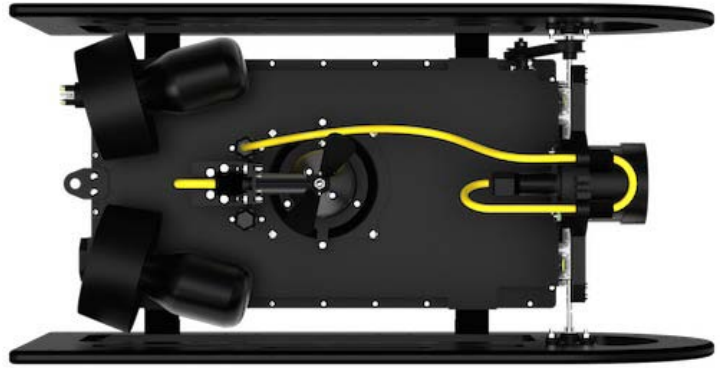


THRUSTER CONFIGURATIONS

ROVEEE comes in three different thruster configurations. You will always find the right ROVEEE for your job.

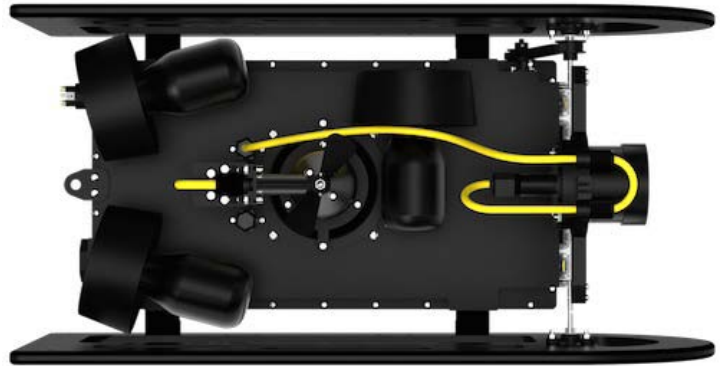
THREE-THRUSTERS

Light yet powerful enough for most inspection jobs.



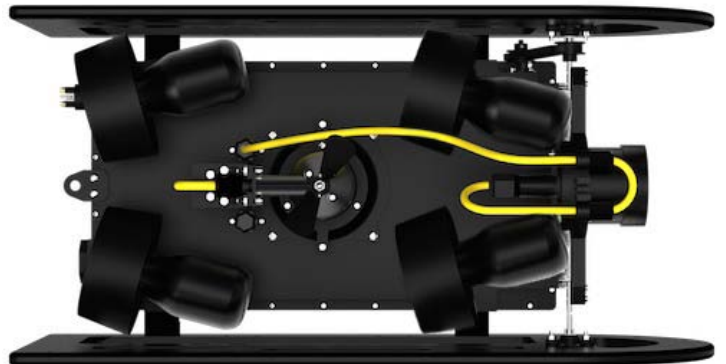
FOUR-THRUSTERS

Best of both worlds, with the addition of a lateral thruster.



FIVE-THRUSTERS

Full symmetric power on all directions.



HIGH-RESOLUTION VIDEO FEED

High Resolution 1200 HTVL video feed overlaid with useful data including depth, compass heading, pitch, water temperature, and other system status all packaged in a compact control console unique among mini ROVs.

Autopilot functions like autodepth and autoheading also comes standard.



HIGH-DEFINITION CAMERA

ROVEEE comes with a main standard definition camera for piloting, together with a unique remotely tiltable mounting mechanism to allow you to attach your own GoPro HD 4k camera which allows you to record in stunning HD everything the main camera is looking at, and allows your GoPro to tilt in sync with the main camera, ensuring you will not miss that important detail your client expects to see.

A 300-meter depth-rated 4K HD Camera powered by GoPro is an option.

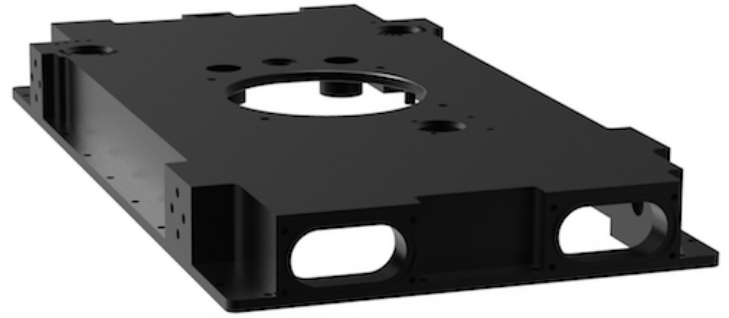


TOUGHEST CHASSIS FROM SOLID ALLOY

ROVEEE's Unistructure™ chassis is precision machined from a solid block of very hard aluminum alloy.

This multi-functional part is ROVEEE's main structural element and, at the same time, protects and supports all electronics and other active components -- minimizing weight and maximizing rigidity. Power supplies, sensors, tilting mechanisms, and fixed lighting are all protected by this lightweight yet very strong and rigid enclosure -- fully oil-compensated for pressure tolerance and ultra-efficient cooling.

This Unistructure™ ensures your ROVEEE survives where others can't so you can finish the job on time and on budget.



EXTREME STABILITY

With a very large separation between the center of buoyancy and the center of gravity enabled by ROVEEE's compact Unistructure™ at the very bottom of the vehicle, stability can only be matched by bulkier and a lot more expensive ROVs.



SPECIFICATIONS

GENERAL

300 meters depth rating
Oil-compensated
18.9 kg submersible weight in air (5thrusters)
17.8 kg submersible weight in air (4thrusters)
16.6 kg submersible weight in air (3thrusters)
~60 kg total system weight
240V AC 50/60hz input
Robot dimensions:
63 cm length
31 cm width
29 cm height



VISION

1200 HTVL High Resolution Camera
NTSC standard (PAL option available upon request)
Super wide dynamic range
Up to 0.01 lux sensitivity
Remotely tiltable camera (135 degrees tilt range)
3200 lumens LED lighting
Remotely tiltable mounting for GoPro HD
HD 4K 300m-depth rated camera powered by GoPro is available as an option



PROPULSION

Oil-compensated
15-30 degrees vectorable angles
Direct-drive
Brushless permanent magnet motor
95 mm propeller diameter
Up to 7 kgf thrust each thruster
Anodized aluminum alloy housing



CONTROL CONSOLE

- 12-inch Display
- Watertight case (when closed)
- Composite video output
- Control for depth, forward, reverse, turn left/right, lateral (4 and 5 thrusters)
- Camera angle and light intensity
- Autoheading and autodepth functions
- Depth display (temperature-corrected)
- Compass heading (gyro and accelerometer-corrected)



TETHER

- Kevlar-reinforced
- 11.5 mm nominal diameter
- Neutrally-buoyant
- Tangle-free



TRANSPORT CASE

- Water-proof (when closed)
- Trolley-type
- Cases all ROVEEE parts in one place



PARTS WARRANTY

Standard warranty is 1 year or 300 operating hours, whichever comes first. Warranty extension (2 years or 600 hours whichever comes first) is available upon request.

Parts replacement warranty covers manufacturing defects (not including tether and propellers).